

# OKLAHOMA CITY SPRING SECTIONAL

May 20-23, 2010

## Bricktown Hotel & Convention Center

2001 East Reno (I35 & I40) Exit 127

Oklahoma City, OK 73117

405 235-1647

Bridge Rate \$79 King,

\$89 double Queen plus tax

Shuttle Available to Bricktown



### NEWCOMER PROGRAM

0-50 POINTS

Strats 0-5, 5-20, 20-50

\$6 entry

Thursday, Friday & Saturday

9 a.m. 1 & 6:30 p.m. Pairs

Sunday - 10:00 a.m. - TBA

Minimum of 3 Tables

### THURSDAY, FRIDAY & SATURDAY MAY 20-22

9 a.m. Stratified Choice Pairs  
Newcomer Pairs  
Bracketed KO (Rd 1)

1 p.m. Stratified Choice Pairs  
Newcomer Pairs  
Bracketed KO (Rd 2)

6:30 p.m. Stratified Choice Pairs  
Newcomer Pairs  
Bracketed KO (Rd 3)

### District GNT Finals

Sat. 1 & 6:30 p.m.

Cont'd Sun. at 10 a.m. if needed

### SUNDAY, MAY 23

10:00 a.m. Stratiflighted Swiss Teams  
Ax 0-2500, A 2500+ Ax & A play together

**B 300-1250, C 50-300, D 0-50**

B, C, & D play together

Play through with  
complimentary lunch

Sooner Unit Website

[www.soonerbridge.com](http://www.soonerbridge.com)

### TOURNAMENT CONTACTS:

Shelba Parmley 405-751-1984  
shelbaparmley@sbcglobal.net  
Newcomers: Jan Waddle 405-848-9628  
janwaddle43@cox.net  
Shirley Shaddix 405-330-0619  
lshaddix@aol.com  
Partnership: Fran Petrusawich Cell 405-833-2537  
fanpie@cox.net

### ENTRY FEES:

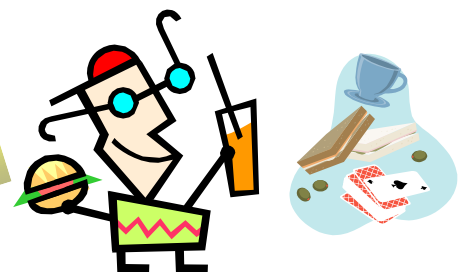
Open Pairs & Bracketed KOs  
\$10 per person per session  
Sunday Swiss: \$80 per team  
Newcomer events \$6 per session  
Students with ID \$5 per session  
\$2 additional for non & unpaid ACBL members

### STRATIFICATION:

A-1500+. B-500-1500, C-0-500

Strats in the pairs and Swiss  
teams will be determined by the  
average of players' masterpoints.

Hospitality  
Suite



**ACBL Zero Tolerance Tournament**