

# OKLAHOMA CITY WINTER SECTIONAL

JAN 8-10, 2010

## Bricktown Hotel & Convention Center

2001 East Reno (I35 & I40) Exit 127  
Oklahoma City, OK 73117  
405 235-1647

Bridge Rate \$79 King, \$89 double Queen plus tax  
Shuttle Available to Bricktown

### NEWCOMER PROGRAM

0-50 POINTS

Strats 0-5, 5-20, 20-50

\$6 entry

Friday - 9 a.m. 1 & 7 p.m. - Pairs

Saturday 9 a.m. 1 & 7 p.m. Pairs

Sunday - 10:00 a.m. - TBA

Minimum of 3 Tables

### FRIDAY, JANUARY 8

9 a.m. Stratified Open Pairs  
Newcomer Pairs

1 p.m. Stratified Open Pairs  
Newcomer Pairs

7 p.m. Stratified Open Pairs  
Bracketed Kos (Rd 1)  
Newcomer Pairs



### SATURDAY, JANUARY 9

9 a.m. Bracketed KOs (Rd 2)  
Stratified Open Pairs  
Newcomer Pairs

1 p.m. Bracketed KOs (Final)  
Stratified Open Pairs  
Newcomer Pairs

7 p.m. Stratified Open Pairs  
Newcomer Pairs



### SUNDAY, JANUARY 10 -Play Through

10:00 a.m. Stratiflighted Swiss Teams  
Ax 0-2500, A 2500+ Play separately  
B 750-1500, C 300-750, D 0-300  
B, C, & D play together

Play through/complimentary lunch

**Sooner Unit Website**  
[www.soonerbridge.com](http://www.soonerbridge.com)

*Hospitality Suite  
Friday &  
Saturday*

### TOURNAMENT CONTACTS:

Shelba Parmley 405-751-1984

shelbaparmley@sbcglobal.net

Ken Dekker 405-525-4363

Newcomers: Jan Waddle 405-848-9628

janwaddle43@cox.net

Shirley Shaddix 405-330-0619

lshaddix@aol.com

Partnership: Fran Petrusawich Cell 405-833-2537

fanpie@cox.net



### ENTRY FEES:

Open Pairs & Bracketed KOs

\$10 per person per session

Sunday Swiss: \$80 per team

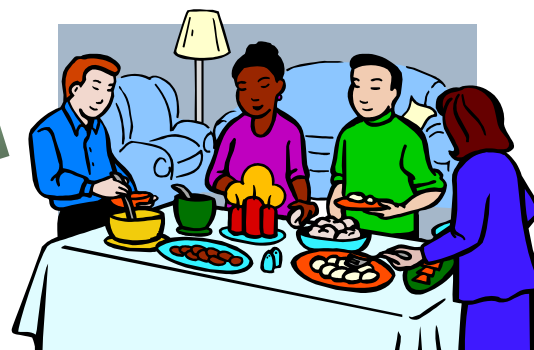
Newcomer events \$6 per session

Students with ID \$5 per session

\$2 additional for non & unpaid ACBL members

### STRATIFICATION:

A-1500+. B-500-1500, C-0-500



**ACBL Zero Tolerance Tournament**